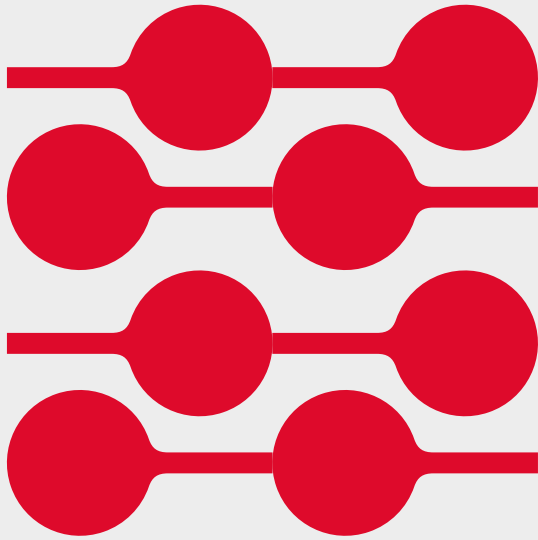


# NELSON ST LANEWAY UPGRADE



## PRELIMINARY DESIGN

Information pack

July 2024



# NELSON ST LANEWAY UPGRADE

## FINAL PRELIMINARY DESIGN

### Introduction

We are progressing work on the Nelson St Laneway Upgrade. We want future improvements to make the laneway:

- A more welcoming place for local residents, businesses and the community.
- Safer for people walking, cycling or using scooters.
- A more attractive space with planting and lighting.
- A laneway that the neighbourhood is proud of.

### Design update

A comprehensive engagement process was undertaken on the preliminary design in late 2023. The feedback we received through public engagement helped us further develop the updated design presented in this update.

While not every piece of feedback can be integrated into the design, we reviewed all individual responses received during engagement and we sincerely value the input.

### A snapshot of feedback

#### Positive support:

Over 50% of the community supports the proposed improvements.

People in support believe the updates are long overdue and will make the area more attractive and safer for pedestrians.

#### Safety improvements welcomed

Better lighting and wider footpaths are welcomed to make the area more people-friendly, accessible and safer.

#### Mixed feedback about parking

Loading zones are important and concerns were raised by the potential loss of on-street parking.

### Green spaces

The addition of green screens, trees and planter boxes were supported by some while others were concerned about an increase in maintenance required.

### Amenity concerns

Other concerns raised include potential for rubbish dumping, obstruction, and increased maintenance with planter boxes.

### Cycle suggestions

We received useful suggestions about how the design could be changed to improve cycling safety and manoeuvrability.

### More information:

To find out more about how the design responds to community feedback and for the full community engagement report. <https://progressakl.co.nz/nelsonstreet>

# PRELIMINARY DESIGN SNAPSHOT

The following is a snapshot of the proposed features and some we are still investigating:



## Better street lighting

- Better and more even lighting will make the laneway more inviting to use in the evening.
- Lantern style light poles will shine more light on people walking in the laneway.
- Lower poles will minimise light spilling into nearby apartments.
- Coloured uplighting of the overpass structure will enhance the aesthetic and help reduce shadows.
- The lights will be positioned to reduce light spill into nearby properties.



## Māori design

We are working with mana whenua to identify additional cultural design opportunities for Nelson St laneway (see page 2 for more information).



## Improved footpaths

- The footpath width will increase to between 2.5 and 5 metres along the length of the laneway, creating more walking space.
- The footpath will feature decorative finishes at the entrances to the laneway at Cook and Union Streets.
- Rationalising street furniture and obstructions to maximise footpath width.
- We will also make space for trees and plants and a place for people to park their bikes in the laneway.



## Existing driveways

- Existing driveways will be retained to ensure rubbish trucks and emergency vehicles can access them.

- The driveways will be resurfaced in the footpath areas to match the look and style of the new footpaths.



## Adding plants and trees

- More greenery with planters, garden beds and trees.
- Lower-level planting will be mostly native with some flowering species.
- Plant selection will be thoughtful about potential issues such as leaf drop, height and visibility.
- We are exploring the use of green walls to soften the appearance of the large concrete overpass/bridge structure.
- The combination of planting, new footpaths and a narrower road will create a much nicer place.

## **A narrower road**

- Narrowing the road to slow traffic and make the road safer for everyone.
- All driveway access will be maintained.
- The layout of the pedestrian crossings at the traffic lights at both the Cook and Union Street intersections will not change.

## **Safer for people on bikes**

The Nelson Street cycleway will remain the main route for cyclists, not the laneway. To improve safety for those connecting to the cycleway we will:

- Since community engagement we are proposing a bidirectional cycleway at the union street end of the laneway instead of a shared path. This means pedestrians and cyclists will be separated and won't need to use the same pavement area.

- Raise and widen the crossing point providing a safe place to cross and requiring drivers to slow down.
- Provide a ramp before the widened crossing point to help slow traffic down before the crossing point.
- Paint the crossing point a distinctive magenta (pink) colour to make a connection with Te Ara I Whiti – The Lightpath.

## **Parking and loading**

We are proposing to remove the paid on-street parking spaces to widen the footpaths, address the safety issues, and make room for planting.

- This means a total of eight P15 loading zone spaces are proposed to support current and ongoing residential development.
- Two additional general purpose loading zones will be located outside Ascent Apartments and at the Cook Street end of the laneway.

- These loading zones enable you to park a vehicle for up to 15 minutes to load or unload goods and passengers.
- The two car share spaces will be retained.

## **Stormwater**

- Adding a new footpath channel drain as we widen the footpath.
- Adding extra catchpits to help manage stormwater better along the laneway.
- Installing filter units into the catchpits to help prevent larger pieces of rubbish getting into the drainage system.

## **Safety**

- We are working with Auckland Transport to identify options to install CCTV throughout the laneway to improve safety and assist with parking enforcement.

# MĀORI DESIGN ELEMENTS

We are ensuring cultural values are integrated into the design by working with Ngāti Whātua Ōrākei and Te Ākitai Waiohū on the design of the Nelson St Laneway project, working together to celebrate the area's special cultural heritage.

Following a visit to the laneway with mana whenua representatives (Māori tribal group(s) who have ancestral ties to the land), the following key design elements have been identified for the laneway:

- **Native planting:** native plant species to establish a sense of connection with the whenua (land) and enhance te taiao (the natural environment).
- A visually captivating **gateway to the city** at the Union Street end to acknowledge and celebrate the local cultural heritage.
- **Mahi toi** (art): cultural narratives to be expressed creatively along the laneway.
- **Sustainable stormwater treatment** that enhances te taiao (the natural environment) where feasible.

Two features which reflect the key design elements have been included as opportunities in the design and will be developed collaboratively with Ngāti Whātua Ōrākei and Te Ākitai Waiohū as the project progresses:

- A drinking fountain at the Union Street gateway.
- Patterned light below the underpass representing the historical awa (river) that once flowed beneath the SugarTree apartments.

As we develop the design, we will work with Ngāti Whātua Ōrākei and Te Ākitai Waiohū to identify opportunities for the integration of mahi toi elements in the streetscape, further weaving Māori artistry into the fabric of the laneway.

We want the design features to reflect and celebrate the cultural history of the area and that the community can interact with.



NELSON STREET OVERPASS CONSTRUCTION  
CIRCA 1956

# NELSON STREET LANEWAY

## PRELIMINARY DESIGN

27\_05\_2024  
REVISION B





# OVERVIEW PLAN

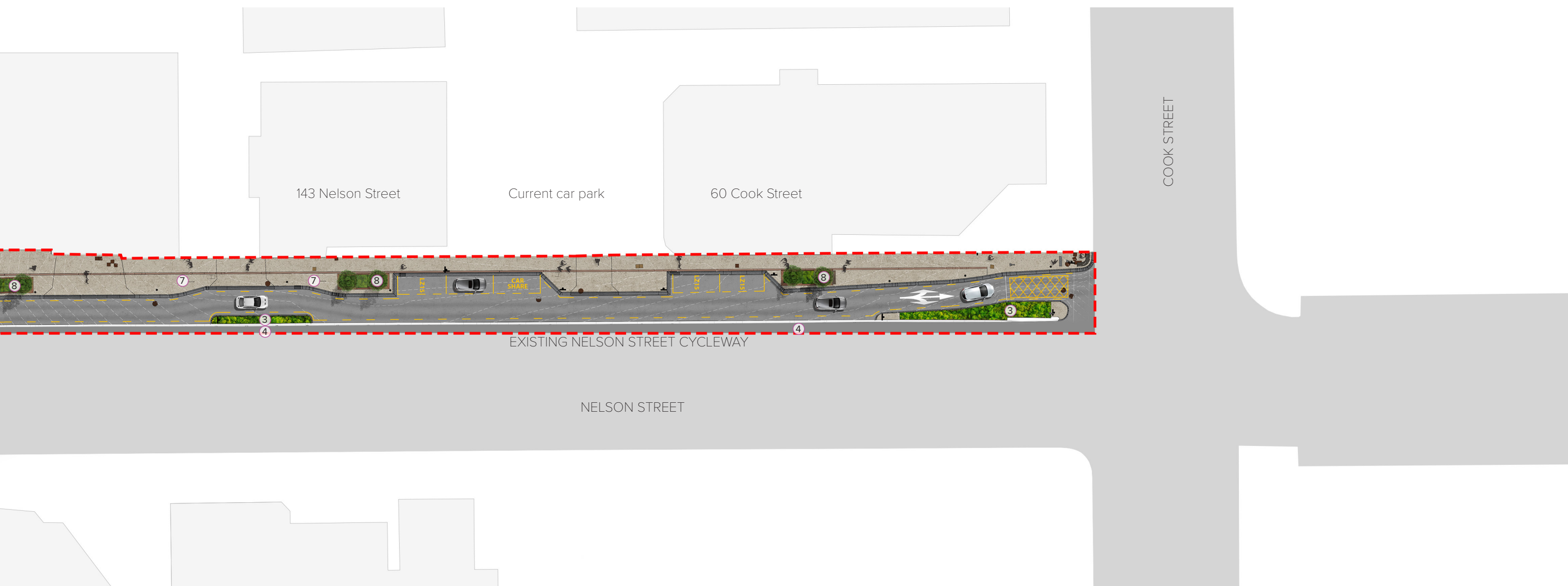
**LEGEND**

- 1. Opportunity for a water fountain to be designed with mana whenua
- 2. Raised cycle crossing point
- 3. Low level planting
- 4. Coloured uplighting below the overpass  
Opportunity to create patterned light
- 5. Koru pattern on footpath to provide link to Te Ara I Whiti ("The Lightpath")
- 6. Tactile paving (yellow blisters/bumps) to help warn blind or vision impaired pedestrians there is a safe place to cross
- 7. Cycle parking
- 8. Raised planters with street trees
- 9. Street trees





1:500 @ A3

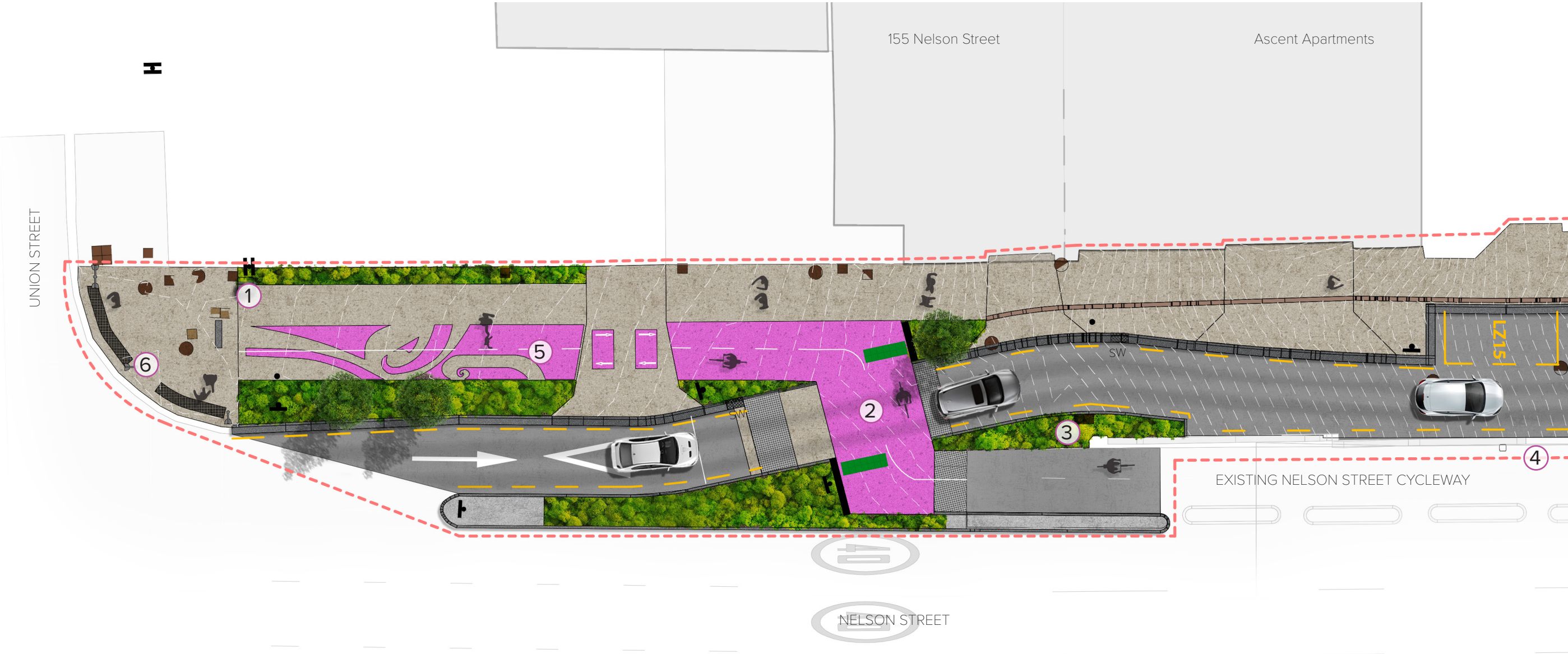




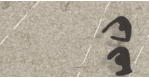
# PLAN\_01



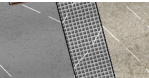
1:200 @ A3



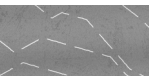
## LEGEND



**FOOTPATHS**  
Concrete footpath with decorative finish and feature saw cuts



**STONE PAVING**  
Feature stone sett paving



**CARRIAGEWAY**  
Asphalt roadway to be retained



**CYCLEWAY**  
Pink finish to footpath to provide link to Te Ara I Whiti ("The Lightpath")



**CHANNEL DRAIN**  
Channel drain



**KERBING**  
Re-use of existing bluestone kerb



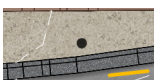
**GARDEN BEDS**  
Low level planting



**TREES**  
Street trees



**TREES IN PLANTERS**  
Raised planters with street trees



**LIGHT POLES**  
Pedestrian scale light poles



**STORM-WATER CATCHPITS**  
Storm-water catch-pit locations



**RELOCATE EXISTING UTILITIES**  
Existing utilities pits to be moved / coordinated with design

## NOTES

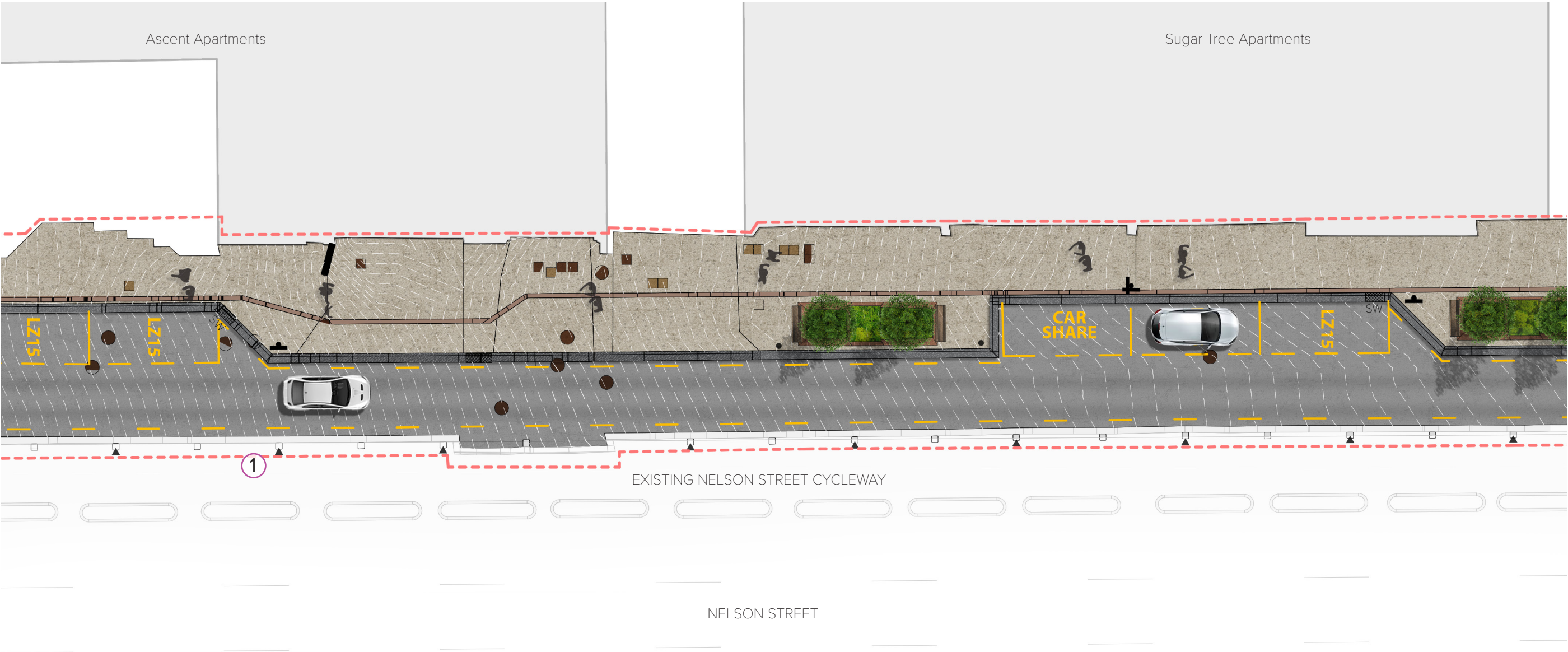
1. Water fountain to be designed with mana whenua
2. Raised cycle crossing point
3. Low level planting
4. Coloured uplighting below the overpass.
5. Koru pattern on footpath to provide link to Te Ara I Whiti ("The Lightpath")
6. Tactile paving (yellow blisters/bumps) to help warn blind or vision impaired pedestrians there is a safe place to cross



# PLAN\_02



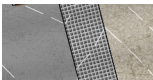
1:200 @ A3



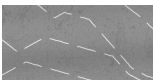
### LEGEND



**FOOTPATHS**  
Concrete footpath with decorative finish and feature saw cuts



**STONE PAVING**  
Feature stone sett paving



**CARRIAGEWAY**  
Asphalt roadway to be retained



**CYCLEWAY**  
Pink finish to footpath to provide link to Te Ara I Whiti ('The Lightpath')



**CHANNEL DRAIN**  
Channel drain



**KERBING**  
Re-use of existing bluestone kerb



**GARDEN BEDS**  
Low level planting



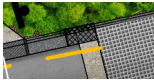
**TREES**  
Street trees



**TREES IN PLANTERS**  
Raised planters with street trees



**LIGHT POLES**  
Pedestrian scale light poles



**STORM-WATER CATCHPITS**  
Storm-water catch-pit locations

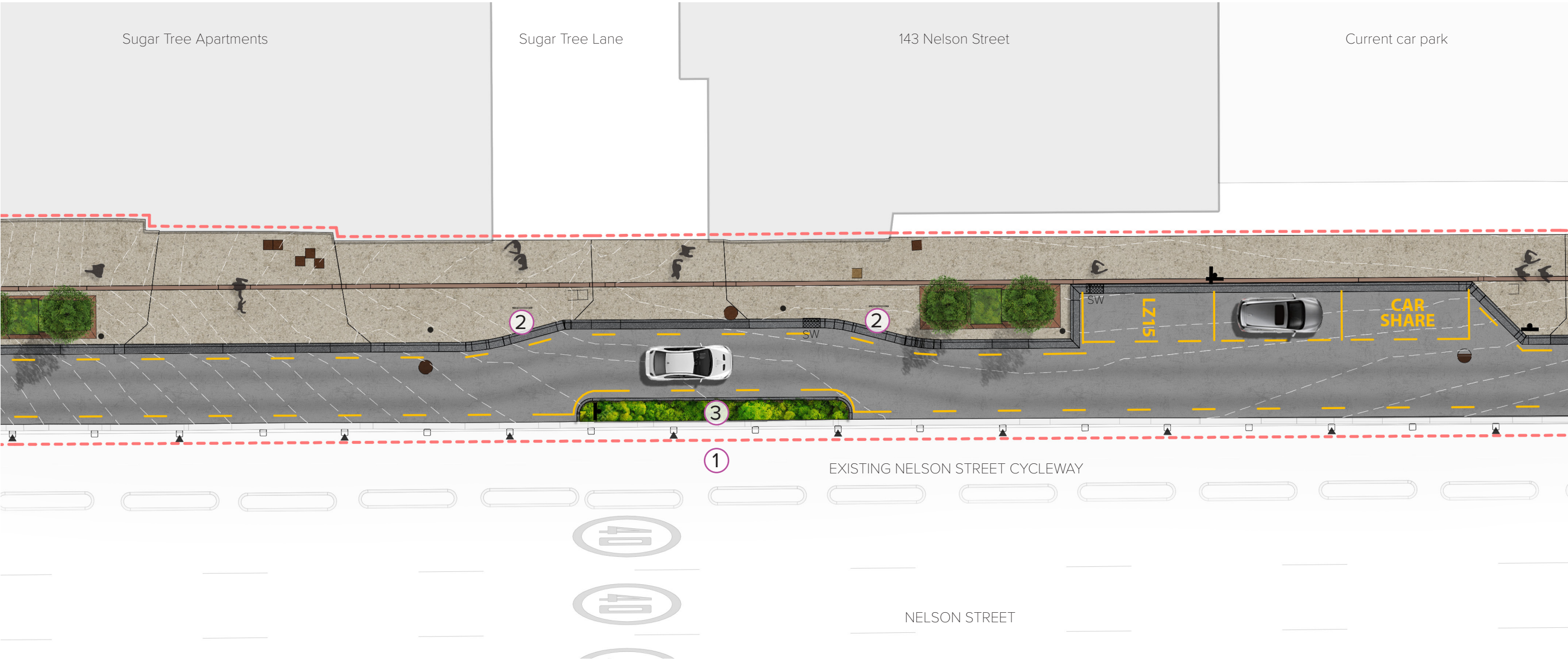


**RELOCATE EXISTING UTILITIES**  
Existing utilities pits to be moved / coordinated with design

### NOTES

1. Coloured uplighting below the overpass.





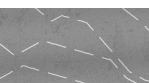
LEGEND



**FOOTPATHS**  
Concrete footpath with decorative finish and feature saw cuts



**STONE PAVING**  
Feature stone sett paving



**CARRIAGEWAY**  
Asphalt roadway to be retained



**CYCLEWAY**  
Pink finish to footpath to provide link to Te Ara I Whiti ("The Lightpath")



**CHANNEL DRAIN**  
Channel drain



**KERBING**  
Re-use of existing bluestone kerb



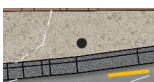
**GARDEN BEDS**  
Low level planting



**TREES**  
Street trees



**TREES IN PLANTERS**  
Raised planters with street trees



**LIGHT POLES**  
Pedestrian scale light poles



**STORM-WATER CATCHPITS**  
Storm-water catch-pit locations



**RELOCATE EXISTING UTILITIES**  
Existing utilities pits to be moved / coordinated with design

NOTES

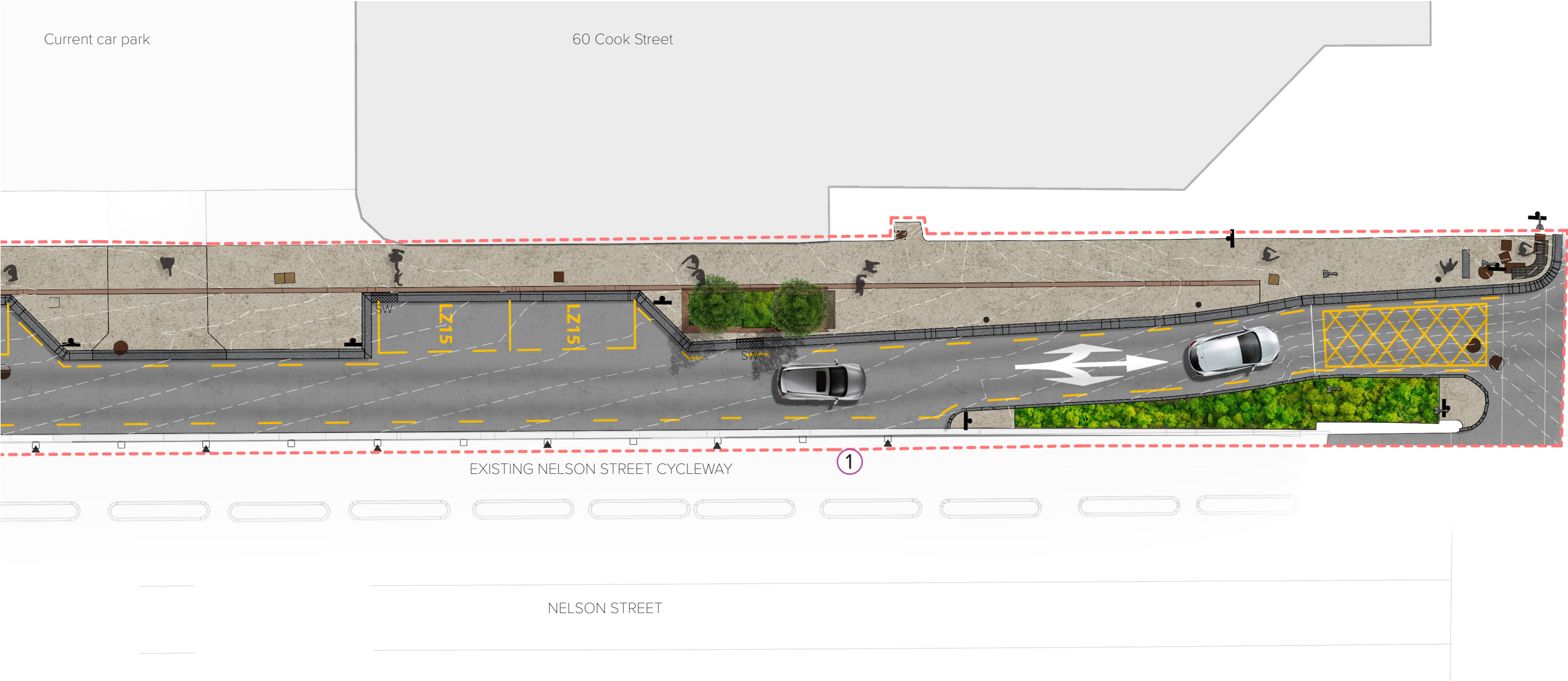
1. Coloured uplighting below the overpass.
2. Cycle parking
3. Greenwall



PLAN\_04



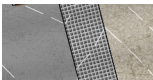
1:200 @ A3



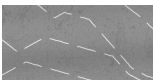
LEGEND



**FOOTPATHS**  
Concrete footpath with decorative finish and feature saw cuts



**STONE PAVING**  
Feature stone sett paving



**CARRIAGEWAY**  
Asphalt roadway to be retained



**CYCLEWAY**  
Pink finish to footpath to provide link to Te Ara I Whiti ("The Lightpath")



**CHANNEL DRAIN**  
Channel drain



**KERBING**  
Re-use of existing bluestone kerb



**GARDEN BEDS**  
Low level planting



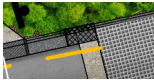
**TREES**  
Street trees



**TREES IN PLANTERS**  
Raised planters with street trees



**LIGHT POLES**  
Pedestrian scale light poles



**STORM-WATER CATCHPITS**  
Storm-water catch-pit locations



**RELOCATE EXISTING UTILITIES**  
Existing utilities pits to be moved / coordinated with design

NOTES

1. Coloured uplighting below the overpass.