



EMILY PLACE IMPROVEMENTS PROJECT – DESIGN INFORMATION

June 2026

EMILY PLACE IMPROVEMENT PROJECT

Introduction

We are pleased to share the final design for the Emily Place Improvements Project, which aims to provide a more people-focused environment.

The proposed improvements align with the City Centre Masterplan, which focuses on making better use of city centre spaces and improving the quality of the environment.

The key objectives are to:

- Deliver a quality, accessible, attractive, distinctive and desirable public place
- Create a destination that celebrates and responds to the cultural heritage and built form of the area
- Provide a space that empowers local community-led placemaking and activation opportunities

Design update

We've now completed the detailed design phase - an important step that prepares the project for construction. The overall direction and character of the project remains consistent with the previous design update.

This final design has been developed through detailed engineering and technical coordination to meet relevant standards and operational requirements.

We've also been working through the necessary approval processes and site investigations to enable construction to begin.

More information:

To find out more about the project, please visit:

audo.co.nz/emilyplace

or email:

emilyplace@aucklandcouncil.govt.nz

FINAL DESIGN SNAPSHOT

Pedestrian priority and safety enhancements

- Adjustments to slip lane routing and manoeuvring space, making it easier for vehicles to turn around
- Traffic calming measures, including two speed humps and reduced road widths
- Two zebra crossing locations in mid Emily Place
- Kerb buildout and added zebra crossing at the Eden Crescent intersection
- Upgraded footpath at the northern side of lower Emily Place
- Two CCTV cameras

Loading and parking provision

A total of 40 car parking spaces comprising:

- 6 loading zone spaces
- 2 car share spaces
- 32 Pay & Display spaces
- Bike parking space provided

Space usability and improved greening

- A community plaza in mid-Emily Place, providing an open flat space adjoining the reserve lawn, with terraced steps along a gently sloped pathway
- New garden beds creating clear separation between pedestrians and vehicles
- Seating provided in mid-Emily Place and within the reserve
- Upgraded lighting across the area, with bollard lighting in the reserve and enhanced lighting in mid-Emily Place
- Removal of one exotic tree, replaced with two new native trees in mid-Emily Place
- Increased native planting within in-ground and raised garden beds, with increased soil volumes to support existing tree health and growth
- New drinking fountain and power supply to support temporary events

Stormwater management

- Increased number of cesspits to improve surface water capture and drainage efficiency
- Passive irrigation and bio-filtration supported through increased soft landscaping, linked garden beds and tree pits, with kerb openings directing water into the soil

Cultural design elements

In partnership with Ngāti Whātua Ōrākei and Ngāti Maru, integrated design opportunities have been explored to celebrate Te Rerenga Ora Iti, the original shoreline, and native flora and fauna:

- Incorporation of mahi toi (art), cultural plinths, and feature seating to express local histories and cultural identity
- Placement of kōhatu (stones) to support storytelling, spatial definition, and informal interaction

KEY CHANGES SINCE PRELIM DESIGN

Traffic Calming

- All pedestrian crossings have been upgraded to zebra crossings to improve visibility and safety, supported by additional lighting
- Improvements to the Shortland Street intersection (including additional zebra crossings) will be delivered by Auckland Transport in advance of this project

CCTV

- Two CCTV cameras: one existing camera relocated and one new camera to be installed

Parking Adjustments

- Six loading spaces to include two allowing any vehicle to use to pick up or drop off goods or passengers, and four for goods vehicles only

Stormwater Management

- A new drainage channel and catchpit are included to improve surface water collection and conveyance

Street Furniture & Amenities

- In mid-Emily Place, planting and street furniture have been refined and rearranged to improve usability and visibility
- Bespoke seating has been refined in collaboration with fabricators to simplify construction while maintaining design intent
- Future handrails and integrated lighting for the reserve stairs to be confirmed through the long-term reserve management planning

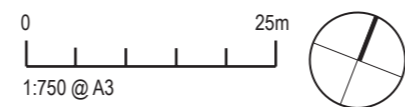
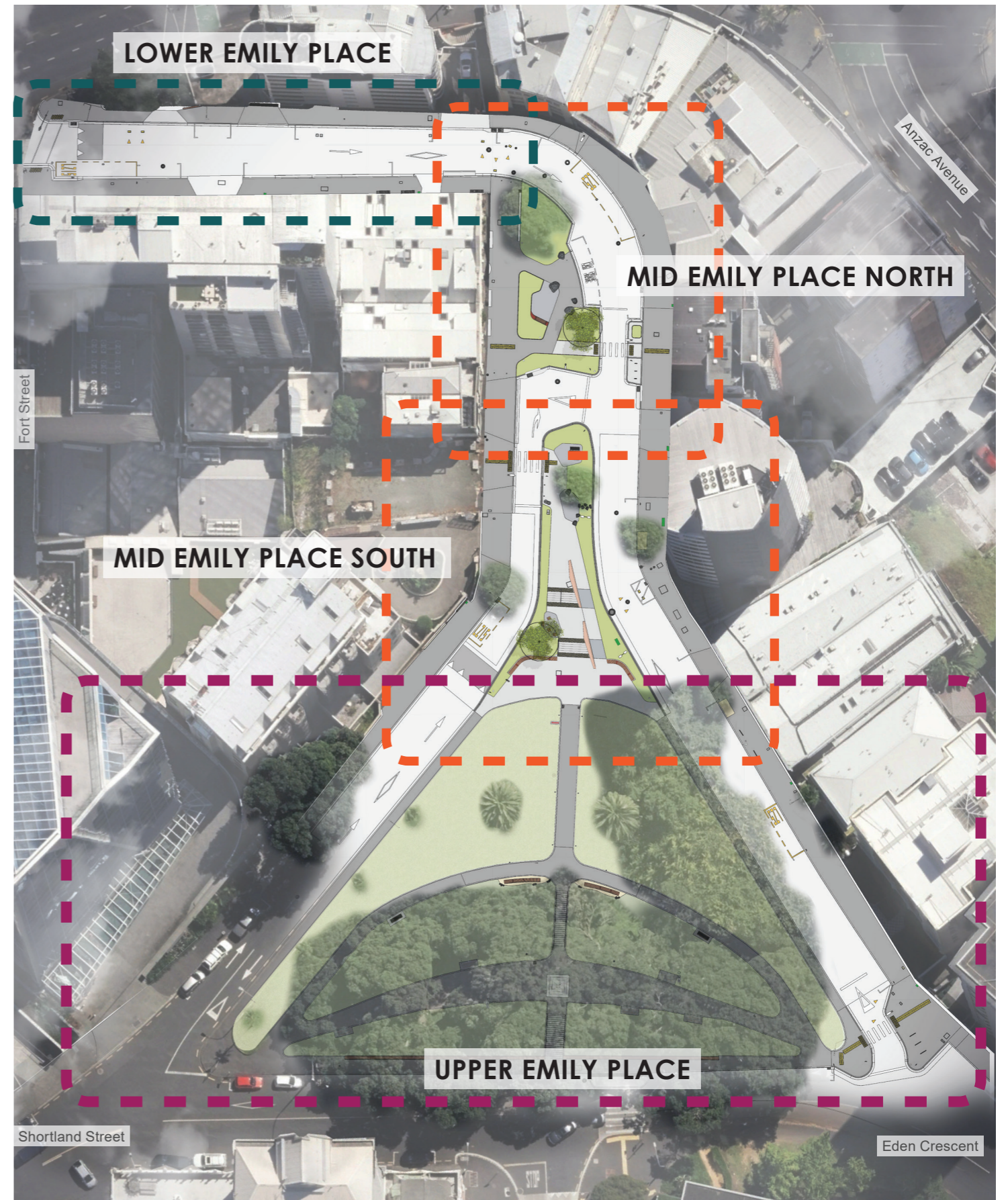
Underground Services

- Coordination of final design layout with underground services following utility investigation outcomes

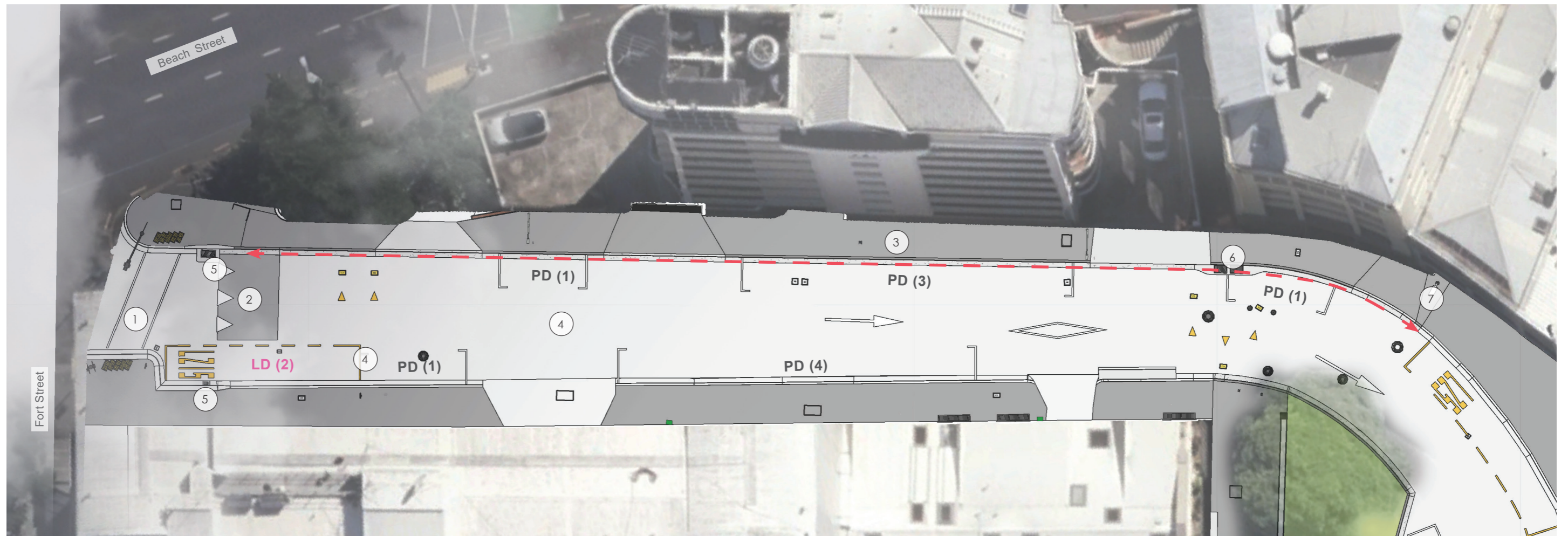
Cultural design

- Cultural design elements and mahi toi further developed in partnership with mana whenua

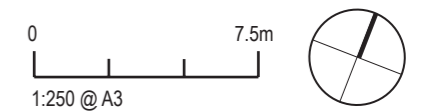
EMILY PLACE | DETAILED DESIGN



LOWER EMILY PLACE | DETAILED DESIGN



1. Existing signalised pedestrian crossing retained
2. Speed hump
3. Widened & re-surfaced northern footpath
 - Kerb height/channel and roadway adjusted to ensure adequate stormwater capacity (← →)
4. Rationalised road width with resurfacing
 - New parking allocation/typology
5. Existing catchpit retained
6. Existing catchpit upgraded
7. CCTV



Parking Key:

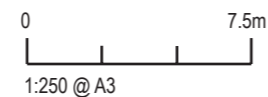
- PD** Paid Parking
- LD** P15 Loading Zone (Goods Vehicles Only) - 15mins maximum

MID EMILY PLACE SOUTH | DETAILED DESIGN

1. Enhanced garden bed to increase permeable surface and soil volume
2. Renewed footpath
3. In-ground raised planter with seating
4. Mahi toi: patterned footpath paving
5. Mahi toi: rocks/kōhatu
6. One Pōhutukawa tree with garen bed
7. Kerb openings to direct water into new garden beds
8. Rationalised road width with re-surfacing
9. Zebra crossing with lighting
10. Kerb buildout with bike stands and one raised planter box
11. Relocated slip lane and removal of one existing tree
12. Catchpit with new channel drain
13. Catchpit
14. Bollards

Parking Key:

- PD** Paid Parking
- LD** P5 Loading Zone (Goods Vehicles Only) - 5mins maximum
- SD** Approved Car Share Vehicles (All Times)

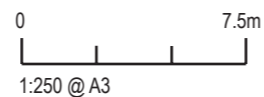


MID EMILY PLACE NORTH | DETAILED DESIGN

1. Zebra crossing with lighting
2. Picnic table and benches with patterned footpath paving
3. Enhanced garden bed around existing tree to increase permeability and soil volume
4. Community Notice board, lighting, CCTV with patterned footpath paving and rocks/kōhatu
5. Bollards
6. Rubbish bins
7. Buffer zone with planting
8. Terraces / Steps with handrails
9. Mahi toi: feature plinth
10. Gentle sloped path
11. Community library with seating and patterned footpath paving
12. One Pūriri tree with garden bed
13. Community Plaza with concrete pavement, seating, lighting and electrical supply box
14. Drinking fountain
15. Rationalised road width, with updated parking layout
16. Speed hump
17. Catchpit
18. Renewed footpath

Parking Key:

- PD** Paid Parking
- LD** P15 Loading Zone (8am - 6pm, Mon - Sat) - 15mins maximum



UPPER EMILY PLACE | DETAILED DESIGN

1. Bollard lighting along the lower reserve path
2. Feature seating provided on both sides of stairs, with integrated amenity lighting
3. Existing bench seating relocated (final location subject to site conditions)
4. Kerb buildout to narrow the carriageway and zebra crossing with lighting
5. Bike stands

Note:

- Shortland Street intersection upgrades to be delivered by Auckland Transport in advance of Emily Place Improvements Project
- All tree works, pest plant management and general maintenance works for the Reserve managed by Auckland Council's Parks and Community Facilities

Parking Key:

- PD** Paid Parking
- LD** P5 Loading Zone (8am - 6pm, Mon - Sat) - 5mins maximum



Shortland Street

Eden Crescent



LOWER EMILY PLACE

ILLUSTRATIVE VIEW



MID EMILY PLACE NORTH

ILLUSTRATIVE VIEW



MID EMILY PLACE SOUTH

ILLUSTRATIVE VIEW



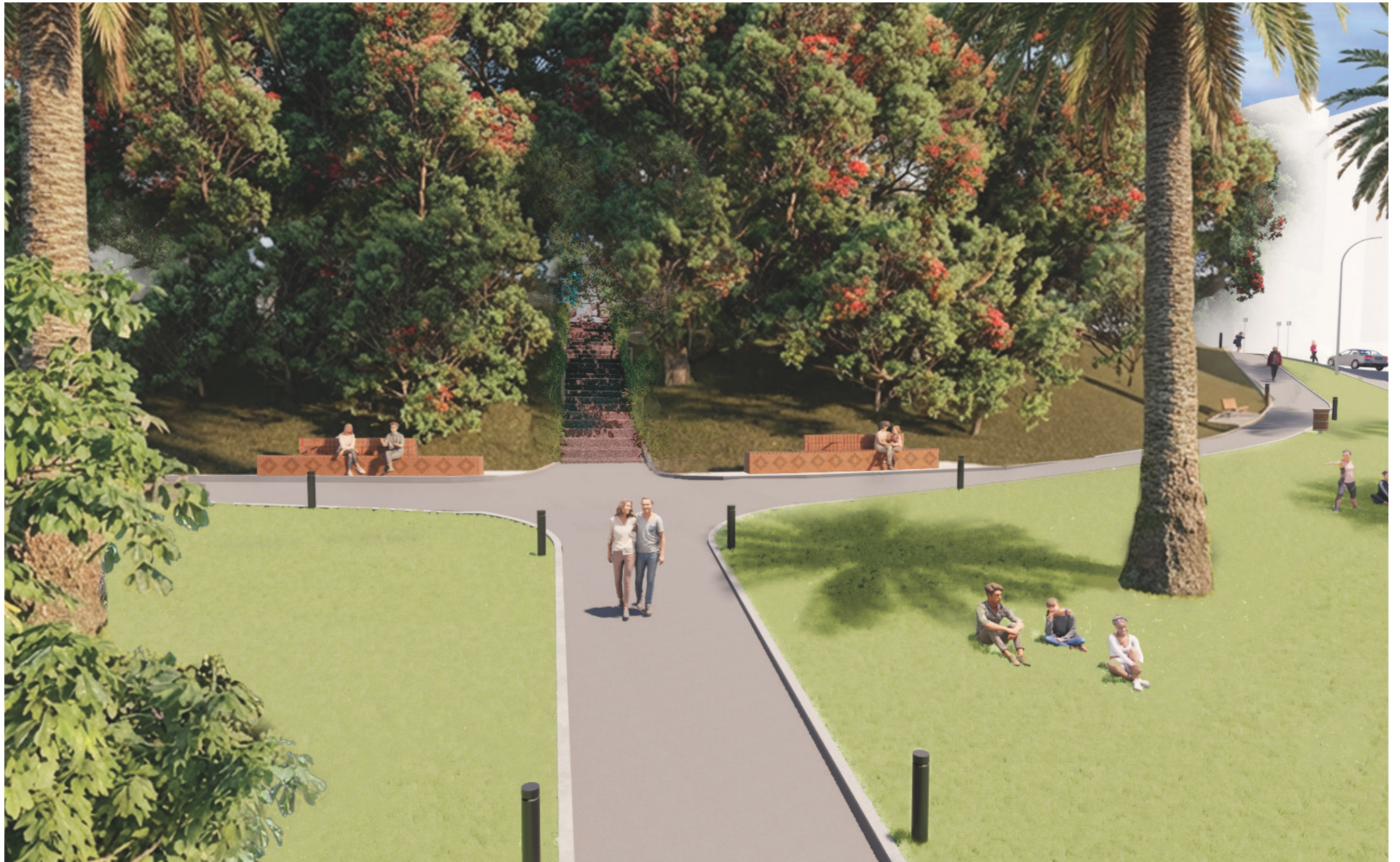
MID EMILY PLACE SOUTH

ILLUSTRATIVE VIEW



UPPER EMILY PLACE

ILLUSTRATIVE VIEW



UPPER EMILY PLACE

ILLUSTRATIVE VIEW

